



**WEST WYCOMBE**  
**CORPORATE ENTERTAINMENT**

---

**P R I C E   G U I D E**

---

# C O N T E N T S

1. CONTENTS
2. SHOOTING PACKAGES
  - Dashwood Day
  - Hellfire Half Day
3. SHOOTING PACKAGES
  - 2 or 3 Hour Shoot
  - Meet and Shoot
4. SHOOTING PACKAGES
  - Charity Shoots
  - Simulated Game Day
5. MULTI ACTIVITY DAYS
6. MULTI ACTIVITY DAYS INCLUDING (continued)
  - Country Pursuits Days
  - Fishing Days
7. TEAM BUILDING
  - West Wycombe Off-Road Challenge
8. TEAM BUILDING (continued)
9. WEDDINGS
10. VENUE HIRE
11. GIFT IDEAS

# SHOOTING



## THE DASHWOOD DAY

A full day's shooting to include tuition, practice and competition, finishing with High Tower Flurries – a great way to end! A hearty three-course lunch is served after the shooting.

- 09.30 Arrive - bacon rolls and Danish pastries will be served with tea and coffee.
- 10.00 Shooting commences with instruction and practice.
- 12.45 Break for soup and rolls (sandwiches in summer) in the Lodge.
- 13.15 Sporting Competition.
- 14.15 High Tower Flurries.
- 14.45 Drinks followed by lunch in the Lodge. Coffee, prize giving (optional) - depart.

Includes gun hire, tuition, safety equipment, insurance, unlimited cartridges and clays and full catering to include half a bottle of wine per head and all tea and coffee.

**Total cost per head £195+VAT per person (based on a minimum of 15 people)**

## THE HELLFIRE HALF DAY

A morning, afternoon or evening shoot - a shorter version of the Dashwood Day with practice and tuition, competition and flurries. A hearty three-course lunch is served after the shooting.

- 09.30 Arrive - bacon rolls and Danish pastries will be served with tea and coffee.
- 10.00 Shooting commences with instruction and practice.
- 11.15 Break for coffee in the Lodge.
- 11.30 Shooting re-commences with individual and team competitions.
- 12.30 High Tower Flurries.
- 13.00 Drinks followed by lunch in the Lodge. Coffee, prize giving (optional) - depart.

Includes gun hire, tuition, safety equipment, insurance, up to 100 cartridges and clays per person and full catering to include half a bottle of wine per head and all tea and coffee.

**Total cost per head £165+VAT per person (based on a minimum of 15 people)**

# SHOOTING

## 2 HOUR SHOOT

Simply two hours of shooting with practice, tuition and a sporting competition. Includes gun hire, tuition, safety equipment, insurance, up to 80 cartridges and clays, and catering.

### Typical Itinerary

- 09.30 Arrive – bacon rolls and Danish pastries served with tea and coffee.
- 10.00 Shooting commences with instruction and practice.
- 11.00 Break for coffee in the lodge.
- 11.15 Shooting re-commences with individual and team competitions.
- 12.15 Return to the lodge for drinks, prize giving and depart.

**Total cost per head £95+VAT (based on a minimum of 4 people)**

## 3 HOUR SHOOT

Similar to the two-hour shoot but includes extra practice time and the thrilling High Tower Flurries to finish. Includes gun hire, tuition, safety equipment, insurance, up to 100 cartridges and clays per person, and catering.

### Typical Itinerary

- 09.30 Arrive – bacon rolls and Danish pastries will be served with tea and coffee.
- 10.00 Shooting commences with instruction and practice.
- 11.15 Break for coffee in the lodge.
- 11.30 Shooting re-commences with individual and team competitions.
- 12.30 High Tower Flurries.
- 13.00 Return to lodge for drinks, prize giving and depart.

**Total cost per head £115+VAT (based on a minimum of 4 people)**

## MEET AND SHOOT

A morning meeting with a buffet lunch of filled baguettes, canapés and cake, and a two-hour shooting session including practice, tuition and competition elements in the afternoon. Includes meeting room hire, gun hire, tuition, safety equipment, insurance, up to 100 cartridges and clays per person, and catering.

*Timings entirely flexible*

**Total cost per head £150+VAT (based on a minimum of 4 people)**

***Additional catering available with all above packages if required***



## CHARITY DAYS

The format of your Charity Day can be tailored to suit your individual requirements. As well as shooting, other activities can be added to your day. Lunch or dinner can be taken in the corporate dining room, which seats up to 120 people, or we can cater for up to 200 lunch or dinner guests in a marquee.

### Typical Itinerary

- 09.00 Arrive at the E.J. Churchill Shooting Ground. Guests register. Bacon rolls and Danish pastries are served with tea and coffee. Guests will be briefed on the day's events.
- 10.00 Competition stands open including Pool Shoots.
- 12.30 Bar opens for those who have finished shooting for the day.
- 14.00 All competition stands close. A three-course lunch is served. Optional prize giving Charity auction takes place. Depart at leisure.

All costs will include use of the E.J. Churchill Shooting Ground, all staff, gun hire, cartridges and clays, score cards, hearing protection, baseball cap, insurance, catering, and a selection of prizes for your auction/ competition.

## SIMULATED GAME DAYS

A superb day's simulated game shooting on the West Wycombe Estate, based at either Fryers Shooting Lodge or West Wycombe House. Guests shoot on a number of "drives" simulating driven pheasant, fast grouse coveys and high flying pigeon.

### Typical Itinerary

- 09.30 Guests arrive - bacon rolls and Danish pastries are served with tea and coffee. Guests are briefed on the rules of the shoot.
- 10.00 Guns are transported to the first of the 3 drives for the morning. Guns line out and get ready at their pegs for the arrival of the first of many birds.
- 13.00 Sandwich lunch and tour of the E.J. Churchill gun-making workshop.
- 13.30 Guns are transported to the last two drives of the day.
- 15.30 Back to the Lodge for drinks and a hearty three-course meal. Depart at leisure.

Includes use of venue and West Wycombe Park, transport around the Estate, clays, safety equipment, insurance and catering to include half a bottle of wine per head and all tea and coffee.

*All our days can be tailored to suit novice or expert shots.*

Prices from £265+VAT per person

# ACTIVITY DAYS

Activity Days offer you and your guests the opportunity to try many different, exciting and challenging activities. You and your guests are guaranteed to have a truly memorable day!

Here are a few of our favourites:



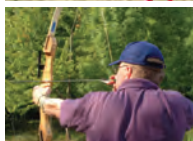
Clay pigeon shooting at the UK's best shooting school.



Off-Road Driving on our challenging West Wycombe course.



You're guaranteed a fun and entertaining time as soon as you have a go on the Patriot buggies especially if you feel the need for speed!



Receive expert archery tuition using state-of-the-art compound longbows of the highest standard for real fun and excitement.

And here are some of the others:





A typical day's format is as follows:

Teams	10.00 - 11.00	11.15 - 12.15	12.15 - 12.45	12.45 - 13.45	14.00 - 15.00	15.00 - 16.30
1	Clays	Off-Roading	LIGHT LUNCH	Patriots	Archery	THREE COURSE MEAL
2	Archery	Clays		Off-Roading	Patriots	
3	Patriots	Archery		Clays	Off-Roading	
4	Off-Roading	Patriots		Archery	Clays	

### **Guideline Prices**

Clays + 3 activities from	<b>£275+VAT per head*</b>
Clays + 2 activities from	<b>£265+VAT per head*</b>
Clays + Off-Road Driving from	<b>£195+VAT per head*</b>

### COUNTRY PURSUIT DAYS

The home of the Dashwood family since the 17th Century, West Wycombe Park is an outstanding and prestigious venue for our Country Pursuit Days. With its beautiful landscaped lake and pristine spring-fed river, you and your guests can combine Clay Pigeon Shooting, Falconry, Fishing and Archery to complete a truly memorable day in the most stunning of settings.

**From £345+VAT per person\***

### FISHING DAYS

The fishery is set at West Wycombe Park. The water comprises of the main lake, which extends to some six acres, and the river system in the shape of a swan. The Park is also abundant in wildlife including kingfishers, ducks and red kites.

The water itself is usually crystal clear and abundant in insect and other life. It is well stocked with brown and rainbow trout. The average size is about 1.5lbs and they run to about 5lbs although the odd larger fish has been caught. We restrict to fly fishing only, usually nymphs and dry flies. We ask that all trout be returned although rods may keep a fish or two if they desire.

**From £345+VAT per person\***

*\*Quotes are done on an individual basis and depend on numbers, timings etc. Above costs are based on 20 guests*

# TEAM BUILDING

## WEST WYCOMBE OFF-ROAD CHALLENGE

Our team building activities or "missions" are designed to develop a range of skills that can be taken back and applied in the workplace. Improved communication, greater confidence, greater motivation, trust, effective use of time and resources and planning skills are just a few we aim to develop.

This package is designed to encourage groups to work together as a team and at the same time have some seriously good fun! The day can be tailored to suit either staff or clients and can be personalised to add extra relevance to your company's products or services.

Each team will be issued with a specialist 4 x 4, estate map and a road book containing a list of missions for them to complete throughout the day. The missions are located within the 5000 acre West Wycombe Estate and teams must negotiate our challenging Off-Road Driving Course to find each activity. They must be able to read the map, and after an initial briefing, be prepared to take their vehicle through some of the most demanding off-roading in the country to reach each mission at the correct time.

### **Please see a selection of our missions below:**

**Rocket Launch.** Recover the key to a rocket detonator from the other side of the minefield. When the whole team is across the rocket can be launched and the chase begins to recover the rocket parachute from 2,000 feet.

**Bomb Disposal.** A bomb has been discovered. The team must open the correct cover plate to gain access to the wiring mechanism; once opened they have 25 minutes to re-configure the wiring and render the bomb harmless; trembler switches and dummy wires must be identified to avoid team vaporisation...

**Bridge Building.** Cross the ravine with the materials provided... harder than it looks!

**Buried Treasure.** To recover the buried treasure from one of the 12 areas you will need to decipher the clues correctly; the wrong answer might involve a lot of unnecessary digging! At the far side of the mission zone is a Kubota digger...who can drive one?



**Archery.** In 30 minutes the team must master the art of longbow archery to be able to score maximum points

**Clay Shooting.** Under the expert supervision of our professional instructor the team must hit 50 targets before they can move on.

**Key Recovery.** The key to a quad bike, which all team members must ride, is attached to a cork at the bottom of a Perspex tube. Using the harsh lessons of fluid dynamics recover the key and negotiate the quad course in the quickest time possible.

**Hellfire Caves.** Descend 300 feet underground to the bottom of the infamous Hellfire Caves to locate the answers to our subterranean quiz.

**Trak-A-Rat.** Four transmitters are attached to four containers and are hidden in different positions in the woods. Each container has a number of compartments containing a RAT (token). With the use of a radio receiver and four different keys you have to retrieve as many RATS as possible. Points are awarded for retrieval and deducted for returning to base late.

**Gold Bars.** Recover gold bars from a sealed compound. Easy until one team member is blindfolded and the rest of the team can only communicate using a selection of whistles and duck calls!

**River Crossing.** Transport the treasure chest across the River Wye. It can be done but only if the team work together.

Costs are based on the activities chosen and the number of guests. Your day will include equipment hire, full tuition, baseball cap, public liability insurance and catering (breakfast, light lunch and full three-course meal with half a bottle of wine per head).

**From £295+VAT per person\***

*\*Quotes are done on an individual basis and depend on numbers and activities chosen. Above costs are based on 20 guests*

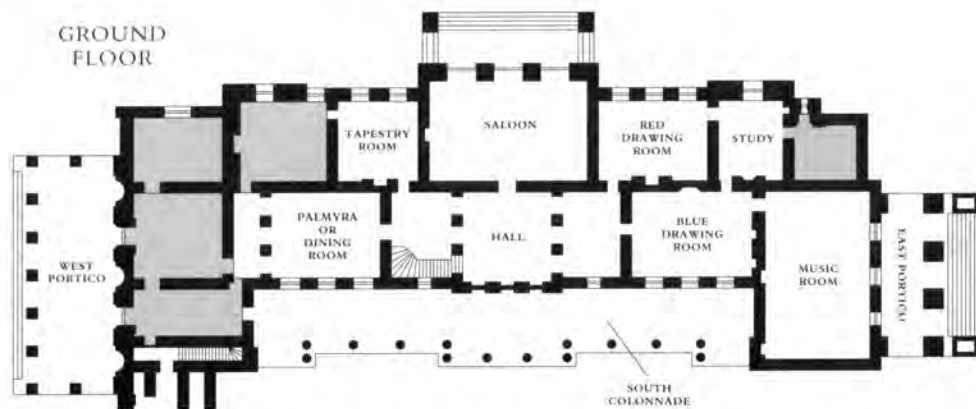
# W E D D I N G S

West Wycombe Park is a unique place for a wedding and is a truly romantic setting with the stunning 18th Century Palladian House surrounded by beautifully landscaped Capability Brown-styled gardens, an exquisite lake in the shape of a swan and various charming temples.

For civil wedding ceremonies both the Great Hall and the Music Room are licensed. The maximum number of guests in these rooms for the service is limited to 120 but more guests may be accommodated in the house elsewhere.

The combinations below are a guide and depend on the precise requirements and number of guests. We can also provide catering, drinks, marquees and all other wedding services if required, or they can be arranged independently.

1. Civil Ceremony in Music Room or Main Hall.
2. Civil Ceremony in Music Room or Main Hall with drinks reception on the East Portico, South Colonnade or inside depending on weather.
3. Civil Ceremony in Music Room or Main Hall. Drinks reception on the East Portico, South Colonnade or inside depending on weather. Marquee overlooking the main house and gardens for the Wedding Breakfast.
4. Civil Ceremony, Reception and Lakeside Marquee for Wedding Breakfast. As Option 3 above but the Marquee location will be by the Lake facing the Music Temple.
5. Reception / Wedding Breakfast only. Various marquee sites available.



# V E N U E   H I R E



## Fryers Farm Barn

Our stunning 18th Century half-timbered barn is ideal for meetings or dinners and a popular base for many of our activity days.

Hire charge from **£950+VAT\***

## The Hellfire Caves

The unique Caves are available for hire for product launches, parties, and wedding receptions. Capacity is 50 seated for dinner and 120 standing. Catering is designed to suit requirements.

Standard hire from 18.00-midnight **£1500+VAT\***

## Kitty's Lodge

Kitty's Lodge is a beautiful lakeside location within West Wycombe Park and has fantastic views of West Wycombe House. The area is ideal for erecting marquees.

Hire charge from **£2000+VAT\***

## West Wycombe Park

The ultimate venue – West Wycombe Park is one of the finest venues in the country and both the House and Park are available for private hire for a truly memorable event.

**Price and availability upon application**



*\*These prices are a guide only and are dependent on numbers/ requirements*



# WEST WYCOMBE

## CORPORATE ENTERTAINMENT

Park Lane, Lane End, High Wycombe HP14 3NS

T: 01494 883808 F: 01494 883733 E: [info@westwycombe.co.uk](mailto:info@westwycombe.co.uk)